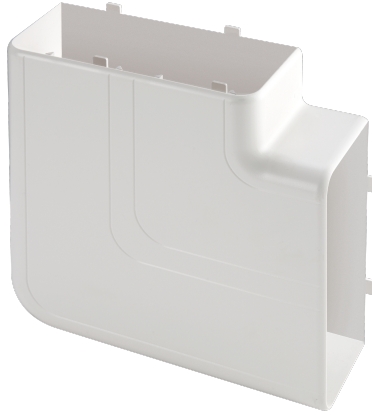


**EC220AP9055**



**FLAT ANGLE DIM. 90X55 mm**

Trunkings > Wall and ceiling > Wiring device trunkings > Series kuadra - for 45x45 devices > Flat corner for device installation trunkings



**Technical Symbols/Marks/Approvals**



**Norms**

EN 50085-1 EN 50085-2-1

**Description**

Flat angle for 90° direction changes. Snaps onto the trunking. Includes a base and cover.

**Etim**

**GROUP EG000006 - Installation ducts for wall and ceiling**

**CLASS EC000876 - Flat bend for wall duct**

<b>Degree of protection (IP)</b>	IP40	<b>Material</b>	Plastic	<b>Material quality</b>	Acrylonitrile butadiene styrene (ABS)
<b>Halogen free</b>	Yes	<b>Anti-bacterial treatment</b>	No	<b>Surface protection</b>	Untreated
<b>Colour</b>	White	<b>Impact strength</b>	IK08	<b>Width</b>	90 mm
<b>Depth</b>	55 mm	<b>Model</b>	Base unit and cover	<b>RAL-number</b>	9001
<b>Mounting method cover</b>	Spanned	<b>With protective foil</b>	No	<b>Working temperature</b>	-5-60 °C
<b>With cable fixing clip</b>	No	<b>With duct connector</b>	Yes	<b>Bottom perforation</b>	No
<b>Angle</b>	90-90 °	<b>Number of covers</b>	1	<b>Cover width 1</b>	90 mm
<b>Symmetric</b>	Yes	<b>Direction</b>	Rising/descending		

**Documentation available for download**



## Barcode



8033576779034

**Unit**

1 NR

0.14 [kg]



8059307212953

**Cardboard**

10 NR

0.39x0.295x0.15 [m]

1.4 [kg]